

SHINY BALLS LTD

佛山市阳光球业有限公司

企业简介

COMPANY PROFILE

Shiny Balls Ltd was established in 2007, is located in the country largest stainless steel decorative materials distribution center: Foshan City, Guangdong Province, is specialized in manufacturing Stainless Steel Hollow Ball/hemispheres, Fire pit balls& bowls, Brass Balls/hemispheres, Carbon Steel Hollow Ball/hemispheres, Hollow Aluminum Balls, Garden Gazing Balls, Water Fountain Balls and Stainless Steel Sculptures.

The full range of the enterprise, are beautiful, practical, unique and innovative style, highlight the noble taste of fashion style is the best choice for modern home/garden decoration. our high quality products, competitive price winning the endorsement of every client. Warmly welcome home and abroad clients business negotiations. Welcome the plans to sample customized all kinds of metal products. Shiny will be able to provide professional, personalized, 24hrs full range services.

Your great support is a source of Shiny's development of enterprises. We'll continue to insist on High-quality first. To spare no effort to open up.









佛山市阳光球业有限公司成立于2007年，位于中国最大的不锈钢装饰材料集散地，广东省佛山市澜石镇。是专业生产及销售不锈钢空心装饰球、黄铜半球/空心球、碳钢半球/空心球、铝空心球/半球、圣诞空心彩球、篝火艺术球体、喷泉球和不锈钢雕塑的综合企业。

本企业品种齐全、美观、实用、款式独特新颖。产品彰显高贵品味，体现时尚风格，是现代家居花园工程装饰的最佳的选择。我们以优质的产品，安全快捷的配送，诚恳务实的作风，赢得每一位顾客的赞同。热忱欢迎海内外客商来函洽谈业务，欢迎来图来样打造各类五金雕塑球体。本公司定能提供专业化、个性化、全天候、全方位的服务。

您的支持是我们发展的源泉和动力。我们将一如既往地坚持以高质量为本，不遗余力去开拓



CONTENTS

	Hollow Stainless Steel Balls /Hemisphere Series 不锈钢空心球/半球系列	P2-P4
	Carbon steel hollow Balls/Hemisphere Series 碳钢空心球/半球系列	P4-P7
	Hollow Brass Balls /Hemisphere Series 黄铜空心球/半球系列	P8-P10
	Hollow Aluminum Balls/Hemisphere Series 铝空心球/半球系列	P11-P13
	Colored Garden Gazing Balls series 彩色空心球系列	P14-P16
	Fire Pits Balls/Bowls Series 篝火球系列	P17-P18
	Water Fountain Balls Series 喷泉球系列	P19-P20
	Stainless Steel Sculptures Series 不锈钢雕塑系列	P21-P22



We are capable of producing stainless steel hollow ball to almost any size matching your specification. Our stainless steel hollow ball/hemispheres in diameter from $\Phi 6\text{mm}$ to $\Phi 200\text{mm}$ ($\Phi 0.23''$ - $\Phi 8''$) in diameter are available with a wall thickness from 0.4mm up to 3mm. From 200mm to 3500mm^[1] (8" to $\Phi 11\frac{1}{4}$ "), Thickness 0.6mm-16mm. Our large reflective stainless steel hollow balls feature a high quality mirror polished finish and are constructed from durable #304 grade stainless steel. We can also offer these giant steel spheres in an AISI #316 stainless steel alloy if your project calls for a material with a higher resistance to corrosion. These large stainless steel spheres are perfect for Architectural and landscape design projects or use in public sculptures.

We offer you the fabrication works on the stainless steel hollow balls. Such as: Drilling. Tapping (Metric and Unified Thread is available). welding. Grinding. Electroplating. Sandblasting and any additional fabricating works could be done According to your requirement.

我们可以根据您的需要制造几乎任何尺寸的不锈钢空心球和半球。规格从6米到200毫米，现有的模具厚度可以做到0.4毫米至3毫米。200毫米到3500^[1]毫米可以做到0.6毫米至16毫米厚度。我们的镜面不锈钢空心大球由高质量的304不锈钢制成。同样我们可以提供316不锈钢材料适合需要高抗腐蚀性要求的环境。这些大型不锈钢空心球镜面效果在室内装饰、园林工程、雕塑上得到了完美的体现。我们能提供钻孔、攻牙（国标和美制牙）、焊接、拉丝、电镀、喷砂等任何球体定制服务。

1: The stated largest size is according to Chinese High Way limitation policy and the flat rack Maximum loading capacity which we can deliver to harbor, we can make any larger size cut to 4 or 8 parts for you to assemble an entire balls

注1: 标注的最大尺寸是根据《中华人民共和国公路法》和平板柜最大装载尺寸。可以定做任何更大尺寸的球体，分成四块或者八块给您组装一个完整球体。

WALL THICKNESS (壁厚)	OUTSIDE DIAMETER(外径)																											
	6	10	12	15	16	19	20	25	30	32	35	38	42	51	55	60	63	66	76	80	90	95	102	114	120	127	138	
MM																												
0.6																												
0.8																												
1.0																												
1.2																												
1.5																												
2.0																												
2.5																												
3.0																												
	150	180	200	250	300	350	400	420	450	480	500	520	530	550	580	600	610	650	680	700	720	750	800	830	880	900	910	
0.8																												
1.0																												
1.2																												
1.5																												
2.0																												
2.5																												
3																												
4																												
5 to 16																												

SIZE RANGE 尺寸标准

WALL THICKNESS (壁厚)	OUTSIDE DIAMETER(外径)																									
	10 00	11 00	11 50	12 00	13 00	14 00	15 00	16 00	17 00	18 00	19 00	20 00	21 00	22 00	23 00	24 00	25 00	26 00	27 00	28 00	29 00	30 00	35 00	38 00	40 00	
MM																										
1.0																										
1.2																										
1.5																										
2.0																										
2.5																										
3.0																										
4																										
5																										
6																										
7																										
8																										
9																										
10-16																										

H Hemisphere only 该尺寸厚度只能做半球。

The thickness depends on the type of plate used. After stamping it slightly decreases. 壁厚为国标板厚. 冲压之后实际壁厚变薄

Any other size can be customized. 订做任意尺寸



We are capable of spinning carbon steel ball/hemisphere to almost any size matching your specifications. Size range from Φ 19 mm to Φ 3500mm (Φ ¾" - Φ 11¼ft) ,It available with a wall thickness from 1mm up to 16mm.

Our carbon steel hemispheres feature a vintage style after rusting. A 45° welding groove is capable of welding for a fire pit ball. it could be precisely to assemble a entire sphere. Designed with plasm cutting by your artistic creation.

根据您的需求.我们可以制造几乎所有尺寸碳钢空心球和半球。我们标准尺寸从19MM到3500MM.厚度1MM到16MM。碳钢半球在生锈之后展现出复古风格.可以焊接出一个精美完整圆球，用于切割篝火艺术球根据您自己的设计。

WALL THICKNESS (壁厚)	OUTSIDE DIAMETER(外径)																											
	6	10	12	15	16	19	20	25	30	32	35	38	42	51	55	60	63	66	76	80	90	95	102	114	120	127	138	
MM																												
0.6																												
0.8																												
1.0																												
1.2																												
1.5																												
2.0																												
2.5																												
3.0																												
	150	180	200	250	300	350	400	420	450	480	500	520	530	550	580	600	610	650	680	700	720	750	800	830	880	900	910	
0.8																												
1.0																												
1.2																												
1.5																												
2.0																												
2.5																												
3																												
4																												
5 to 16																												

SIZE RANGE

尺寸范围

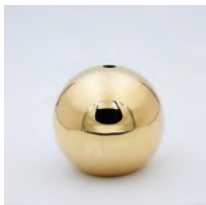
WALL THICKNESS (壁厚)	OUTSIDE DIAMETER(外径)																									
	10 00	11 00	11 50	12 00	13 00	14 00	15 00	16 00	17 00	18 00	19 00	20 00	21 00	22 00	23 00	24 00	25 00	26 00	27 00	28 00	29 00	30 00	35 00	38 00	40 00	
1.0																										
1.2																										
1.5																										
2.0																										
2.5																										
3.0																										
4																										
5																										
6																										
7																										
8																										
9																										
10-16																										

SIZE RANGE 尺寸标准

H Hemisphere only 该尺寸厚度只能做半球。

The thickness depends on the type of plate used. After stamping it slightly decreases.壁厚为国标板厚.冲压之后实际壁厚变薄

Any other size can be customized.订做任意尺寸



Our hollow Brass Balls/hemispheres are a decorative, high reflective accent, suitable for many applications such as Jewelry, Sculpture, Church and weather vanes.

我们的装饰精抛光黄铜空心球可以用于首饰、雕塑、教堂和风速计等。



WALL THICKNESS (壁厚)	OUTSIDE DIAMETER(外径)																										
	6	10	12	15	16	19	20	25	30	32	35	38	42	51	55	60	63	66	76	80	90	95	102	114	120	127	138
MM																											
0.6																											
0.8																											
1.0																											
1.2																											
1.5																											
2.0																											
2.5																											
3.0																											
	150	180	200	250	300	350	400	420	450	480	500	520	530	550	580	600	610	650	680	700	720	750	800	830	880	900	910
0.8																											
1.0																											
1.2																											
1.5																											
2.0																											
2.5																											
3																											
4																											
5 to 16																											

SIZE RANGE 尺寸标准

WALL THICKNESS (壁厚)	OUTSIDE DIAMETER(外径)																									
	10 00	11 00	11 50	12 00	13 00	14 00	15 00	16 00	17 00	18 00	19 00	20 00	21 00	22 00	23 00	24 00	25 00	26 00	27 00	28 00	29 00	30 00	35 00	38 00	40 00	
MM																										
1.0																										
1.2																										
1.5																										
2.0																										
2.5																										
3.0																										
4																										
5																										
6																										
7																										
8																										
9																										
10-16																										

H Hemisphere only 该尺寸厚度只能做半球。

The thickness depends on the type of plate used. After stamping it slightly decreases. 壁厚为国标板厚. 冲压之后实际壁厚变薄

Any other size can be customized. 订做任意尺寸



Our aluminum hollow ball is capable for industry floating, sculptures and special fields. there is a visible welding seam on the balls inevitable upon 250mm size.

我们的空心铝球广泛用于工业浮球、雕塑和一些特殊领域。因为其物理特性，250MM无可避免的球体上有可见焊考

SIZE RANGE 尺寸规格

WALL THICKNESS (壁厚)	OUTSIDE DIAMETER(外径)																											
	6	10	12	15	16	19	20	25	30	32	35	38	42	51	55	60	63	66	76	80	90	95	102	114	120	127	138	
MM																												
0.6																												
0.8																												
1.0																												
1.2																												
1.5																												
2.0																												
2.5																												
3.0																												
	150	180	200	250	300	350	400	420	450	480	500	520	530	550	580	600	610	650	680	700	720	750	800	830	880	900	910	
0.8																												
1.0																												
1.2																												
1.5																												
2.0																												
2.5																												
3																												
4																												
5 to 16																												

WALL THICKNESS (壁厚)	OUTSIDE DIAMETER(外径)																									
	10 00	11 00	11 50	12 00	13 00	14 00	15 00	16 00	17 00	18 00	19 00	20 00	21 00	22 00	23 00	24 00	25 00	26 00	27 00	28 00	29 00	30 00	35 00	38 00	40 00	
MM																										
1.0																										
1.2																										
1.5																										
2.0																										
2.5																										
3.0																										
4																										
5																										
6																										
7																										
8																										
9																										
10-16																										

SIZE RANGE 尺寸标准

H Hemisphere only 该尺寸厚度只能做半球。

The thickness depends on the type of plate used. After stamping it slightly decreases. 壁厚为国标板厚. 冲压之后实际壁厚变薄

Any other size can be customized. 订做任意尺寸



Black(黑色)



Blue(蓝色)



Green(绿色)



Gold(金色)



Orange(橙色)



Rainbow(七彩)



Red(大红色)



Pink(粉红色)



Purple(紫色)



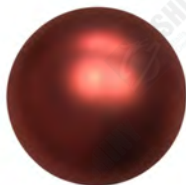
Diamond Blue(宝石蓝)



Rose gold(玫瑰金)



Titanium Gold(钛金)



Matt Red(磨砂红色)



Matt gold(磨砂金色)



Matt rose(磨砂玫瑰金)



Chrome(8K铬色)



Pearl white(珍珠白)



Champaign gold 香槟金

More color is available according to your require.根据您的需要，我们可以做更多的颜色。

WALL THICKNESS (壁厚)	OUTSIDE DIAMETER(外径)																										
	6	10	12	15	16	19	20	25	30	32	35	38	42	51	55	60	63	66	76	80	90	95	102	114	120	127	138
0.6						P	P	P		P	P	P	P	P	P	P	P	P	P	P	P	P		P	P		
0.8	P	P	P	P	P	P		P		P	P	P	P	P	P	P	P	P	P	P	P	P	P	P	P	P	P
1.0	P	P	P	P	P	P		P		P	P	P	P	P	P	P	P	P	P	P	P	P	P		P	P	P
1.2								P		P		P	P	P			P		P	P	P	P	P		P	P	
1.5												P	P	P					P	P	P	P	P		P		
2.0														P						P	P		P		P		
2.5																								P		P	
3.0																								P		P	
	150	180	200	250	300	350	400	420	450	480	500	520	530	550	580	600	610	650	680	700	720	750	800	830	880	900	910
0.8	P	P	P	P	P	P	P	P	P	P	P																
1.0	P	P	P	P	P	P	P	P	P	P	P																
1.2	P	P	P	P	P	P	P	P	P	P	P																
1.5	P		P	P	P	P	P	P	P	P	P																
2.0	P		P	P	P	P																					
2.5	P		P	P																							
3	U																										
4																											
5 to 16																											

SIZE RANGE 尺寸标准

WALL THICKNESS (壁厚)	OUTSIDE DIAMETER(外径)																											
	10 00	11 00	11 50	12 00	13 00	14 00	15 00	16 00	17 00	18 00	19 00	20 00	21 00	22 00	23 00	24 00	25 00	26 00	27 00	28 00	29 00	30 00	35 00	38 00	40 00			
MM																												
1.0																												
1.2																												
1.5																												
2.0																												
2.5																												
3.0																												
4																												
5																												
6																												
7																												
8																												
9																												
10-16																												

p Vacuum Metalizing (PVD) and Titanium electroplating are both available. 该尺寸UV电镀和真空电镀都可以做。

■ Electroplating only. 该尺寸只可真空电镀。



All of our Fire pits & bowl are created by man hand, Featured a unique art piece each. It's available with tradi-tional, Western and customized style.

The finished balls can be painted with a heat proof paint or they can be left to weather and develop a rust pati-na naturally. If left in their natural finish it will take many decades for a ball to rust away, and as the rust develops they look very organic in an appealing industrial way. A beautiful addition to any garden.

所有我们的篝火球半球全是手工制作。可以根据西方文化和传统文化定制各类风格图形。所有成品球可以添加耐热涂处理或者自 然生锈风化.形成独特的复古工业风格。能完美融入各种花园装饰。

WALL THICKNESS (壁厚)	INNER DIAMETER (内径)																	
	400	500	600	700	800	900	1000	1100	1200	1300	1400	1500	1600	1700	1800	1900	2000	2100
MM																		
3																		
4																		
5																		
6																		
8																		
MM	2200	2300	2400	2500	2600	2700	2800	2900	3000	3100	3200	3300	3400	3500	3800	3900	4000	
5																		
6																		
8																		
10																		
12																		
14																		
16																		

SIZE RANGE 尺寸标准

The thickness depends on the type of plate used. After spinning it slightly decreases.

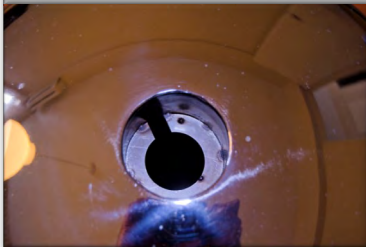
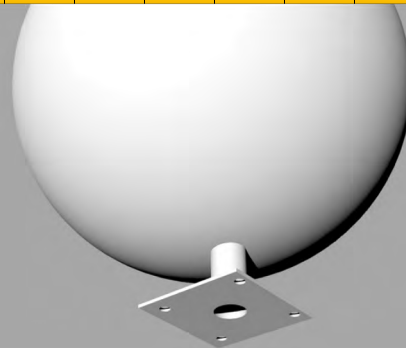
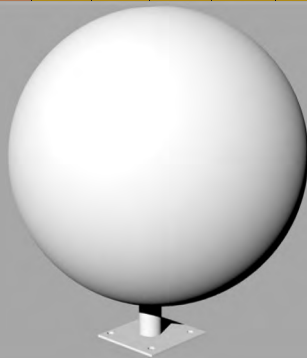
壁厚为国标板厚.旋压之后实际壁厚变薄



The Sphere Garden Fountain is charming and makes a beautiful centerpiece for your favorite outdoor gathering spot. It has a contemporary shape, creating a dramatic and eye-catching effect. Water scales down the sleek surface, spilling into the basin. Easy to assemble, the kit includes the your standard voltage pump and all other components necessary to create your fountain.

球喷泉是一个迷人漂亮的花园装饰品。它由一个镜面不锈钢空心球制造生动有魅力的水流效果。水流从球面流下进入水池。非常容易组装。附件有符合您国家标准电压的水泵和其他制造喷泉的必要配件。

WALL THICKNESS (壁厚)	OUTSIDE DIAMETER(外径)																
	600	700	800	900	1000	1100	1200	1300	1400	1500	1600	1700	1800	1900	2000	2100	
MM																	
1.0																	
1.5																	
2.0																	
3.0																	





Stainless steel sculptures by Shiny Balls Ltd are made to order in High quality stainless steel AISI 304 or 316 Alloy finished with a high reflection mirror finish or multiple customized electroplating/spray painting finishes. At Shiny our focus is factory craftsmanship and offer best quality, and since 2007 our specialty is sculptural features for the landscape. Our contemporary range of Chinese made sculptures can also be customized into a variety of scales, with a body of work that stretches the reaches of the public domain to the private urban courtyard. We have collaborated with many foreign designers and artists who have commissioned Shiny to create features in their beautiful projects, both commercial and residential in size.

Currently we could offer Stainless Steel Pattern Balls, Stainless steel water drop sculptures and stainless steel globes.

由阳光制造的不锈钢雕塑通过高品质的不锈钢 AISI 304 或 316 手工打造，高反射镜面或多种定制喷漆/电镀饰面。在 SHINY 我们的重点是工厂工艺，并提供最好的质量，自 2007 年以来，我们的专业是景观的雕塑。

我们当代的中国制造的雕塑也可以定制为各种规模，其中有一系列工作将公共领域延伸至私人城市庭院。

我们与很多外国设计师和艺术家合作，他们已经委托 Shiny 为他们的商业和住宅项目制作雕塑。我们的系列有不锈钢镂空球，不锈钢水滴和不锈钢地图雕塑球。



Water drop 水滴

- Φ 300mm to Φ 3500MM (Φ 12inch to Φ 11 ¼ ft)
- AISI304/316 stainless steel
- Mirror polished/Electroplated/Spray Painting
- 尺寸从直径300MM到3500MM
- 304/316不锈钢
- 饰面：抛光/电镀/喷漆



Pattern Balls 镂空球

- Φ 600mm to Φ 3500MM (Φ 24inch to Φ 11 ¼ ft)
- AISI304/316 stainless steel
- Mirror polished/Electroplated/Spray Painting
- 尺寸从直径300MM到3500MM
- 304/316不锈钢
- 饰面：抛光/电镀/喷漆



Globes 地图球

- Φ 600mm to Φ 3500MM (Φ 24inch to Φ 11 ¼ ft)
- AISI304/316 stainless steel
- Mirror polished/Electroplated/Spray Painting
- 尺寸从直径300MM到3500MM
- 304/316不锈钢
- 饰面：抛光/电镀/喷漆



***KNOWN FOR VALUE
TRUSTED FOR HIGH-QUALITY***

地址：佛山市禅城区澜石镇澜石五金装饰配件中心10座

Add: 10, No. Lanshi Decorative fittings center. Lanshi town, 528004 Foshan city, Guangdong province, China

Tel/fax: +86 -757-83875036 Email: info@shinydecor.com www.metalsphere.com Firepitball.com



Printed on 50% recycled, 25% post consumer paper