

Container Loading Capacity

RF201.0429CLP



STANDARD 20' or 20' GP or 20' DV

INSIDE LENGTH **5.89 m**
 INSIDE WIDTH **2.33 m**
 INSIDE HEIGHT **2.38 m**
 DOOR WIDTH **2.33 m**
 DOOR HEIGHT **2.28 m**
 CAPACITY **33.18 m³**
 TARE WEIGHT **2,229 kg**
 MAX. CARGO **21,727 kg**



STANDARD 40' or 40' GP or 40' DV

INSIDE LENGTH **12.01 m**
 INSIDE WIDTH **2.33 m**
 INSIDE HEIGHT **2.38 m**
 DOOR WIDTH **2.33 m**
 DOOR HEIGHT **2.28 m**
 CAPACITY **67.67 m³**
 TARE WEIGHT **3,701 kg**
 MAX. CARGO **26,780 kg**



HIGH CUBE 40' or 40' HQ or 40' HC

INSIDE LENGTH **12.01 m**
 INSIDE WIDTH **2.33 m**
 INSIDE HEIGHT **2.69 m**
 DOOR WIDTH **2.33 m**
 DOOR HEIGHT **2.56 m**
 CAPACITY **76.28 m³**
 TARE WEIGHT **3,968 kg**
 MAX. CARGO **26,512 kg**

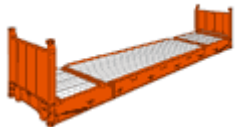


Regular 20' 40' 40HQ' container loading large steel ball max size $\varnothing 2200\text{mm}(\varnothing 7 \frac{1}{3} \text{ feet})$ - Entire ball.



FLAT RACK 20'

LENGTH **5.61 m**
 INSIDE WIDTH **2.20 m**
 INSIDE HEIGHT **2.23 m**
 TARE WEIGHT **2,530 kg**
 MAX. CARGO **21,469 kg**



FLAT RACK 40'

LENGTH **12.06 m**
 INSIDE WIDTH **2.08 m**
 INSIDE HEIGHT **1.95 m**
 TARE WEIGHT **5,479 kg**
 MAX. CARGO **38,918 kg**



The entire steel ball size larger than $\varnothing 2200\text{mm}(\varnothing 7 \frac{1}{3} \text{ feet})$ must be delivered by Flat Rack.